




## Woodlife Trails Course List

**W**oodlife Trails was established to provide unique courses introducing and immersing participants into the countryside.

 In association with the National Trust, our aim is to guide you on a **National Trust** journey of discovery through Britain's woodlands and forests, heightening your awareness and enabling you to appreciate and get closer to its inhabitants. Whatever your experience, you will be able to develop many skills and increase your confidence on the way.



*Woodland Awareness with some young adventurers*



## Woodlife Trails

Phone: 07787 563140

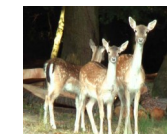
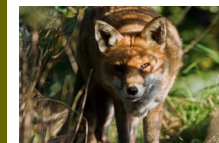
Woodlife.co.uk  
E-mail: info@woodlife.co.uk

© Woodlife Trails 2012 v5.0



Wildlife, Tracking & Bushcraft

## Woodlife Trails Course List 2012



Woodlife.co.uk

info@woodlife.co.uk

Tel: 07787 563 140





## Woodlife Trails



In association with the [National Trust](#), our nature-based **bushcraft & tracking** courses will provide you with a gentle introduction to woodlands and forests aimed at families and young adventurers.

We will then guide you to increasingly advanced levels of awareness & skills until finally, you can fully **immerse** yourselves into the forests and woodlands of Britain.

Courses are also available for more experienced participants eg wildlife enthusiasts & photographers, naturalists and groups including works, corporate and conservation groups, schools, scouts and youth organisations.

Your guides have a whole host of experience from qualified adult learning, armed-service & law enforcement training, counselling and countryman instructional backgrounds. We have many years experience each of instructing bushcraft & tracking subjects and many more years experience dealing with young people, families, adult and corporate groups. Our guidance is structured at the right level to the right audience at the right time.



## 2012 Course List

### Countryside & Woodland Awareness

- An unforgettable journey through England's woodlands & forests for families & individuals. Raise your awareness, discover plant a tree uses and be introduced to the ancient art of tracking (1 day)

### Family Bushcraft & Tracking

A weekend course designed for the whole family. Learn plant uses, woodland crafts, camp crafts and tracking skills all together as a family and, if you like, stay over and wild-camp in the woodland or forest.

### Family Pairs (or partnership) Development

- Designed primarily for partnership or family bonding e.g. father/son mother/daughter. You will learn about woodlands, develop skills and have fun along the way. 1 or 2 days. Suitable for families, family pairs, or partnerships or small groups (group discounts apply).

### Woodland Crafts Course

- Learn the basics of utilising woodland resources and developing woodland crafts such as wood-carving, spoon-making, candle holders, cordage making, cup making, stick making. 1 day. Suitable for families and individuals.

### Wilderness Camp Course

- This weekend course shows you how to set up wild camps in the wilderness from base camps to quick solo shelters. Includes hygiene, basic cooking, fires, stoves and shelter arrangements. Test out different kit and practice your skills in a safe environment.

### Wilderness Immersion Course

- A whole weekend of immersion into England's forests and woodlands getting close-up and personal with it's inhabitants. Includes night tracking, dark adaptation techniques and use of night vision eqpt. 3 days (Friday to Sunday) Suitable for individuals and groups with wild camping experience.

### Woodland Tracker Course

-The Woodland Tracker course is a Friday to Sunday intermediate tracking course specially designed to show you how to track in woodland environments. For this, we will draw on our expert knowledge of the natural environment and its inhabitants, knowledge of bushcraft, various different tracking techniques and modern forensic, detection and deduction techniques.

### Bespoke Group, Corporate or Individual Courses

- A *Pick and Mix* selection of skills and content for serious team-building, group development sessions, informal relaxing days or weekends out in the woods. Also suitable for works and social outings, scouts, school or youth groups or cadets (group discounts apply). This is also suitable for those individuals who like to learn alone (one-to-one sessions) or those who wish to develop their own bespoke course content.

**Gift Voucher**- The ideal gift if you are looking for something for him or her and not sure what to get. This voucher can be traded in towards any Woodlife Trails course on the course list including a bespoke one-to-one session.

**Special Courses** - We will shortly be offering a number of special courses for example advanced bushcraft courses, wildlife observation, advanced crafts courses, archery, advanced carving, primitive skills, flint knapping and expeditions abroad.

### \*\* Special Offers \*\*

Look out for our occasional special promotions like Gift Vouchers, taster days and discounts.

Also look out for our one-off special courses

Visit our website at [woodlife.co.uk](http://woodlife.co.uk)

All our courses have elements of woodland awareness, field-craft, getting closer to wildlife, wildlife tracking, plant and tree identification, use of natural resources (bushcraft) and historical geography.



National Trust

Most courses take place in the beautiful and ancient Hatfield Forest, North Essex in association with the National Trust. Other courses take place in an ancient Essex Woodland or on the edge of Ashdown Forest in Sussex.



### Woodlife Trails

Phone: 07787 563140  
[woodlife.co.uk](http://woodlife.co.uk)  
E-mail: [info@woodlife.co.uk](mailto:info@woodlife.co.uk)

