



Course List 2012

Wildlife, Tracking & Bushcraft Courses

Countryside & Woodland Awareness

- An unforgettable journey through England's woodlands & forests for families & individuals. Raise your awareness, discover plant a tree uses and be introduced to the art of tracking (1 day)

Family Bushcraft & Tracking

A weekend course designed for the whole family. Learn plant uses, woodland crafts, camp crafts and tracking skills all together as a family and if you like, stay over and wild-camp in the woodland or forest.

Family Pairs (or partnership) Development

- Designed primarily for partnership or family bonding e.g. father/son mother/daughter. You will learn about woodlands, develop skills and have fun along the way. 1 or 2 days. Suitable for families, family pairs, or partnerships or small groups (group discounts apply).

Woodland Crafts Course

- Learn the basics of utilising woodland resources and developing woodland crafts such as wood-carving, spoon-making, candle holders, cordage making, cup making, stick making. 1 day. Suitable for families and individuals.

Wilderness Camp Course

- This weekend course shows you how to set up wild camps in the wilderness from base camps to quick solo shelters. Includes hygiene, basic cooking, fires, stoves and shelter arrangements. Test out different kit and practice your skills in a safe environment.

Wilderness Immersion Course

- A whole weekend of immersion into England's forests and woodlands getting close-up and personal with it's inhabitants. Includes night tracking, dark adaptation techniques and use of night vision eqpt. 3 days (Friday to Sunday) Suitable for individuals and groups with wild camping experience.

Woodland Tracker Course

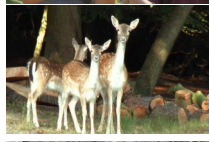
-The Woodland Tracker course is a Friday to Sunday intermediate tracking course specially designed to show you how to track in woodland environments. For this, we will draw on our expert knowledge of the natural environment and its inhabitants, knowledge of bushcraft, various different tracking techniques and modern forensic, detection and deduction techniques.

Bespoke Group, Corporate or Individual Courses

- A *Pick and Mix* selection of skills and content for serious team-building, group development sessions, informal relaxing days or weekends out in the woods. Also suitable for works and social outings, scouts, school or youth groups or cadets (group discounts apply). This is also suitable for those individuals who like to learn alone (one-to-one sessions) or those who wish to develop their own bespoke course content.

Gift Voucher- The ideal gift if you are looking for something for him or her and not sure what to get. This voucher can be traded in towards any Woodlife Trails course on the course list including a bespoke one-to-one session.

Special Courses - We will shortly be offering a number of special courses for example advanced bushcraft courses, wildlife observation, advanced crafts courses, archery, advanced carving, primitive skills, flint knapping and expeditions abroad.



V2.0 © Woodlife 2012

Further details and to book, please visit woodlife.co.uk



Course List 2012

Wildlife, Tracking & Bushcraft Courses

Countryside & Woodland Awareness

- An unforgettable journey through England's woodlands & forests for families & individuals. Raise your awareness, discover plant a tree uses and be introduced to the art of tracking (1 day)

Family Bushcraft & Tracking

A weekend course designed for the whole family. Learn plant uses, woodland crafts, camp crafts and tracking skills all together as a family and if you like, stay over and wild-camp in the woodland or forest.

Family Pairs (or partnership) Development

- Designed primarily for partnership or family bonding e.g. father/son mother/daughter. You will learn about woodlands, develop skills and have fun along the way. 1 or 2 days. Suitable for families, family pairs, or partnerships or small groups (group discounts apply).

Woodland Crafts Course

- Learn the basics of utilising woodland resources and developing woodland crafts such as wood-carving, spoon-making, candle holders, cordage making, cup making, stick making. 1 day. Suitable for families and individuals.

Wilderness Camp Course

- This weekend course shows you how to set up wild camps in the wilderness from base camps to quick solo shelters. Includes hygiene, basic cooking, fires, stoves and shelter arrangements. Test out different kit and practice your skills in a safe environment.

Wilderness Immersion Course

- A whole weekend of immersion into England's forests and woodlands getting close-up and personal with it's inhabitants. Includes night tracking, dark adaptation techniques and use of night vision eqpt. 3 days (Friday to Sunday) Suitable for individuals and groups with wild camping experience.

Woodland Tracker Course

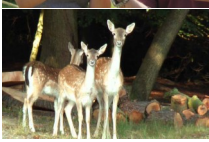
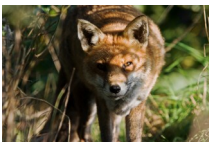
-The Woodland Tracker course is a Friday to Sunday intermediate tracking course specially designed to show you how to track in woodland environments. For this, we will draw on our expert knowledge of the natural environment and its inhabitants, knowledge of bushcraft, various different tracking techniques and modern forensic, detection and deduction techniques.

Bespoke Group, Corporate or Individual Courses

- A *Pick and Mix* selection of skills and content for serious team-building, group development sessions, informal relaxing days or weekends out in the woods. Also suitable for works and social outings, scouts, school or youth groups or cadets (group discounts apply). This is also suitable for those individuals who like to learn alone (one-to-one sessions) or those who wish to develop their own bespoke course content.

Gift Voucher- The ideal gift if you are looking for something for him or her and not sure what to get. This voucher can be traded in towards any Woodlife Trails course on the course list including a bespoke one-to-one session.

Special Courses - We will shortly be offering a number of special courses for example advanced bushcraft courses, wildlife observation, advanced crafts courses, archery, advanced carving, primitive skills, flint knapping and expeditions abroad.



V2.0 © Woodlife 2012

Further details and to book, please visit woodlife.co.uk